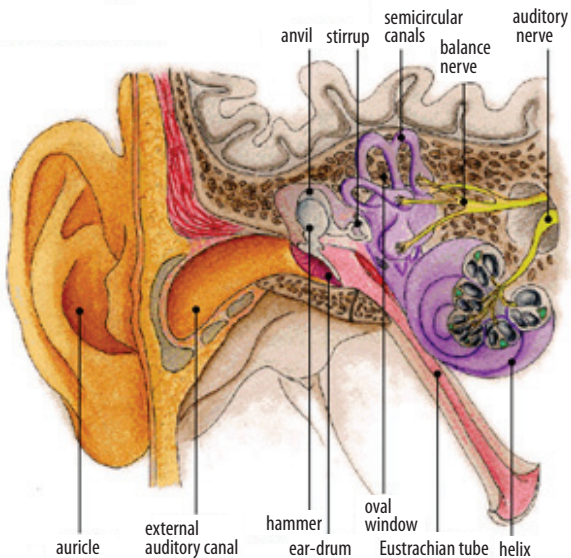


## HEARING CHECKLIST DO YOU...

- Misunderstand conversations?
- Ask people to repeat certain words?
- Avoid social situations where you find it harder to hear or understand?
- Turn up the TV or radio so loud that it annoys others?
- Have ringing, roaring or buzzing in your ears?
- Think people mumble?
- Hear better in one ear than the other?
- Find women's and children's voices difficult to hear?

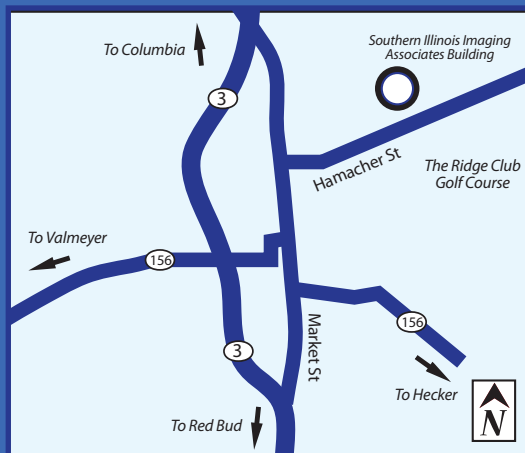
If you answer "yes" to one or more of these "warning signs," you may have a hearing loss. 30% of people over age 65, and 70-80% of people age 75 have a "significant" hearing impairment. In all, more than 30 million Americans have hearing loss.



## 2 CONVENIENT LOCATIONS TO SERVE YOU:

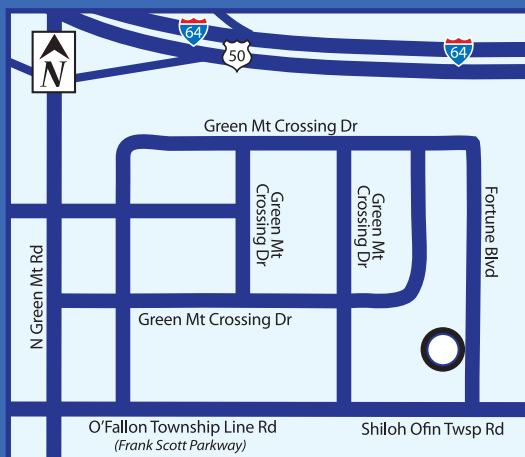
### WATERLOO

509 Hamacher Street, Suite 205  
Waterloo, IL 62298  
**618-939-4ENT (4368)**



### SHILOH

1167 Fortune Blvd.  
Shiloh, IL 62269  
**618-628-0715**



For more information, visit us online at:

[www.ENTandSLEEP.com](http://www.ENTandSLEEP.com)



AUDIOLOGY &  
HEARING AIDS

SERVING THE GREATER ST. LOUIS AREA

## AUDIOLOGIC SERVICES

### INCLUDE:

- Comprehensive Hearing Evaluations to determine hearing health
- Tympanometry (test for presence of fluid in ears)
- Otoacoustic emissions testing (OAEs) (simple, non-invasive test for hearing defects – particularly in children)
- Electro/Videonystagmography (ENG/VNG) (diagnostic test to determine cause of balance dysfunction)
- Electrocochleography (ECochG) (diagnostic test to look for Meniere's disease)
- Treatment of benign positional vertigo (BPV) (dizziness)
- Fitting of custom earmolds for water and hearing protection
- Tinnitus evaluations, (ringing in the ears)

## HEARING AID SERVICES INCLUDE:

- Hearing aid evaluations with highly trained Audiologists
- Advanced diagnostic testing
- Hearing aid dispensing/fitting
- Periodic cleaning and maintenance of hearing aids
- Hearing instrument evaluations and re-programming
- Periodic hearing screenings
- Hearing aid programming for a wide variety of makes and models
- Wide variety of hearing instruments that feature wireless connectivity to the TV and phone

## ABOUT US

ENT and Sleep Medicine Associates, LLC is staffed by fully licensed, certified and dedicated audiologists. The audiology staff of ENT and Sleep Medicine Associates, LLC is very experienced and uses the latest technology to analyze complex hearing problems, fit the latest technology in hearing instruments, and in the rehabilitation of hearing problems.

An audiologist is a university trained professional who has earned a Masters Degree or Doctorate in the identification and care of all types of hearing problems. The audiologist is the only person who can ensure that you receive a thorough, accurate hearing evaluation and that your hearing health care needs are met.



Call us today:

**Waterloo: 618-939-4ENT (4368)**

**Shiloh: 618-628-0715**

to make an appointment.

For more information, visit us online at:

**[www.ENTandSLEEP.com](http://www.ENTandSLEEP.com)**

## HEARING AIDS



### RIC (Receiver-In-The-Canal)

These are very small receiver-in-the-canal devices that fit behind the ear. Sound travels from the nearly invisible instrument through a small tube or wire to a comfortable, tiny dome or speaker in the ear.



### ITE (In-The-Ear)

ITE devices are custom made and fill the concha (the bowl of the ear) and some portion of the ear canal. A broad range of circuit designs are available that allow these devices to be used in individuals with a mild to severe hearing loss.



### ITC (In-The-Canal)

These devices are smaller than ITEs and fit only in the outer portion of the ear canal. ITCs are suitable for patients with a, mild-to-moderate hearing loss.



### CIC (Completely-In-The-Canal)

CICs are the smallest devices available and are cosmetically desirable because they fit deep in the canal and take advantage of the ear's natural resonance and shape, allowing for a more natural sound quality.

*Images courtesy of ReSound.*